

**S250 FIXED PERFORMANCE DATA:
AAMA/WDMA/CSA 101/I.S.2/A440-08
AAMA/WDMA/CSA 101/I.S.2/A440-11**

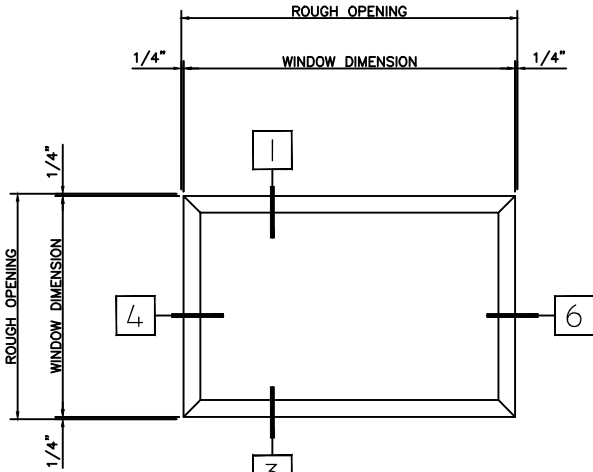
Rating	CW-PG60-FW
Air Infiltration	<0.01 cfm/ft @ 1.57 psf
Water Resistance	**0 leakage at 12.0 lb
Structural Performance	+/- 90.00 psf
Thermally Broken	Yes
Frame Depth	2-1/2"
Infill Options	Maximum 1"

**** Optional Water 0 leakage at 15.0 lb**

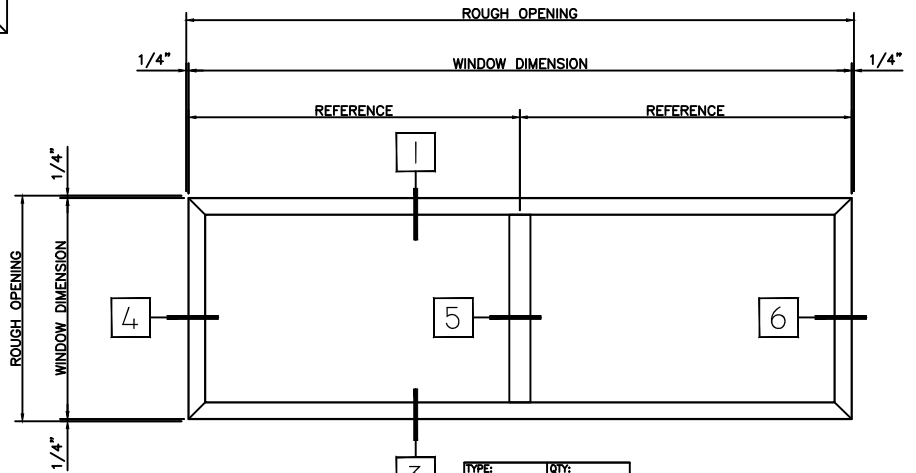
WINTeCH

P.O. BOX 480
 MONETT, MO 65708-0480

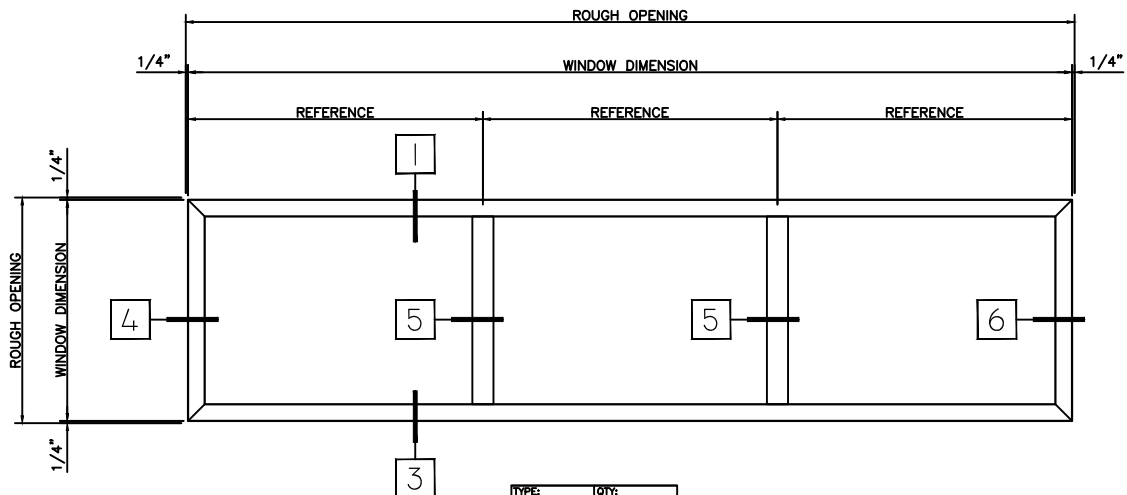
P: 417-235-7821
 F: 417-737-7140
 www.wintechinc.com



TYPE:	QTY:
S250	ARCH MK:
PRODUCT:	
FIXED	



TYPE:	QTY:
S250	ARCH MK:
PRODUCT:	
FIXED-FIXED	



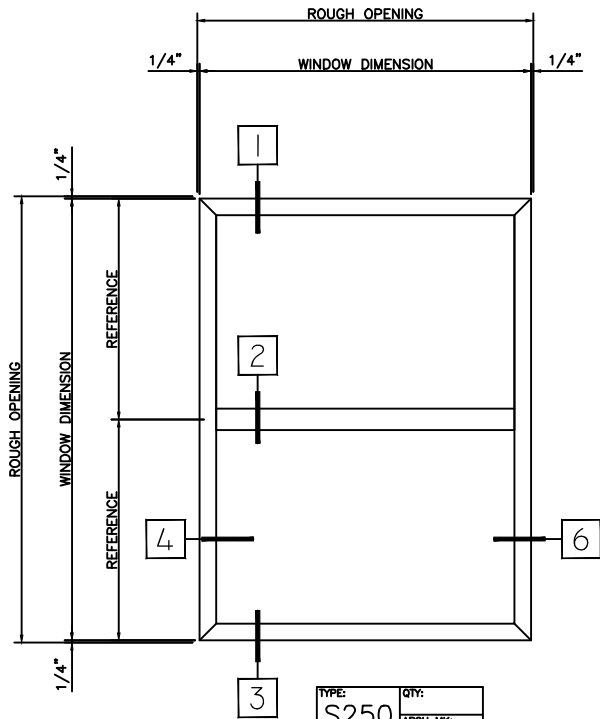
TYPE:	QTY:
S250	ARCH MK:
PRODUCT:	
FXD-FXD-FXD	

HALF SCALE DETAILS

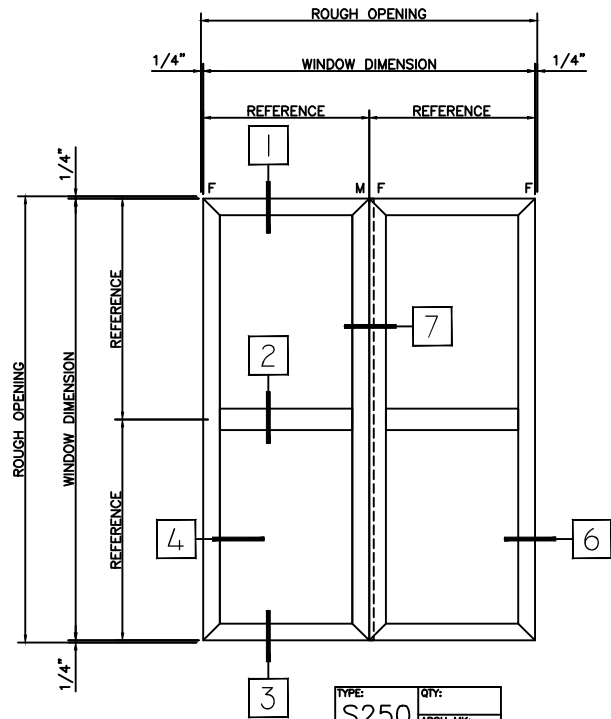
WINTeCH

P.O. BOX 480
MONETT, MO 65708-0480

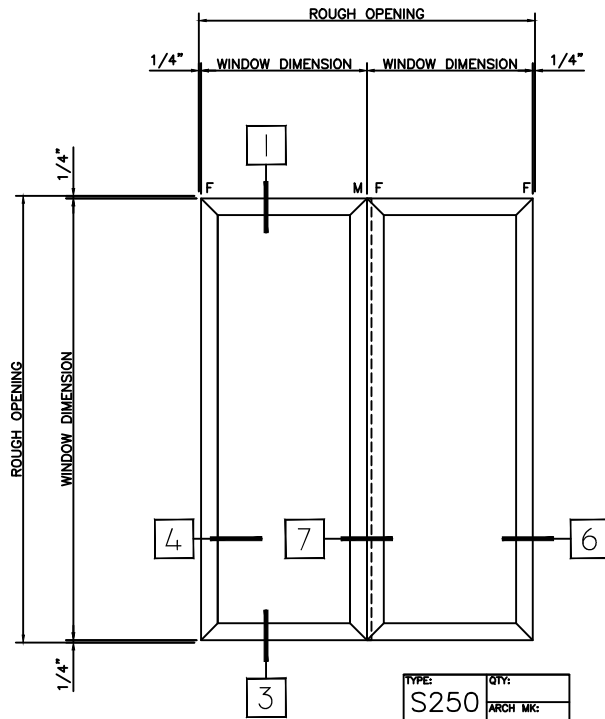
P: 417-235-7821
F: 417-737-7140
www.wintechinc.com



TYPE:	QTY:
S250	
ARCH MK:	
PRODUCT:	
FXD/FXD	



TYPE:	QTY:
S250	
ARCH MK:	
PRODUCT:	
4 LITE STK FIXED	



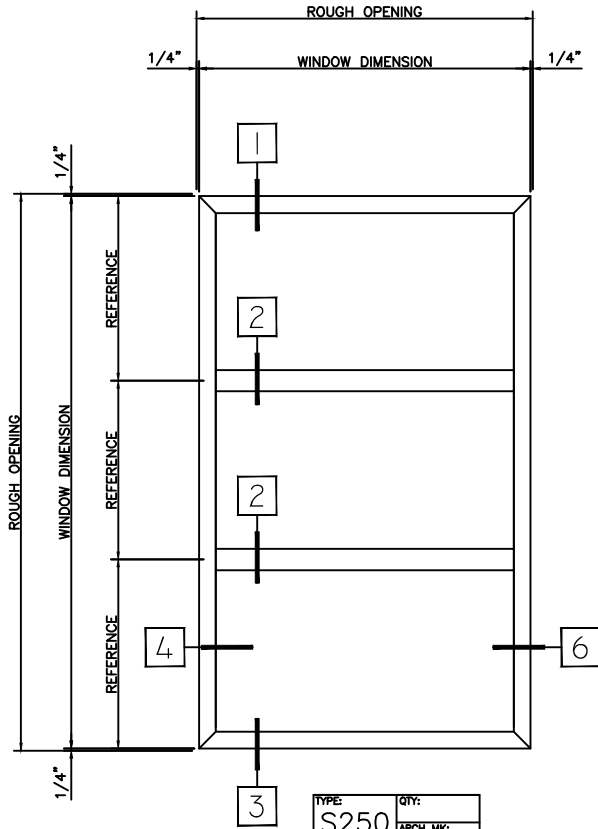
TYPE:	QTY:
S250	
ARCH MK:	
PRODUCT:	
FXD-FXD STACK	

HALF SCALE DETAILS

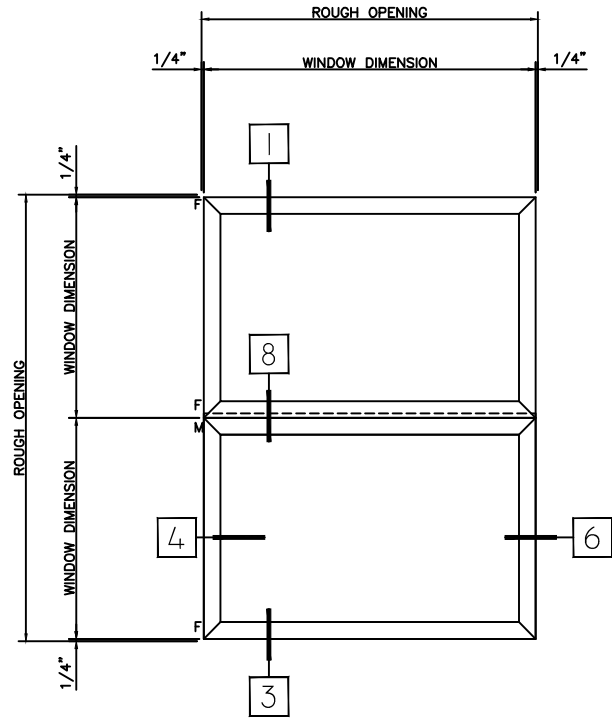
WINTeCH

P.O. BOX 480
MONETT, MO 65708-0480

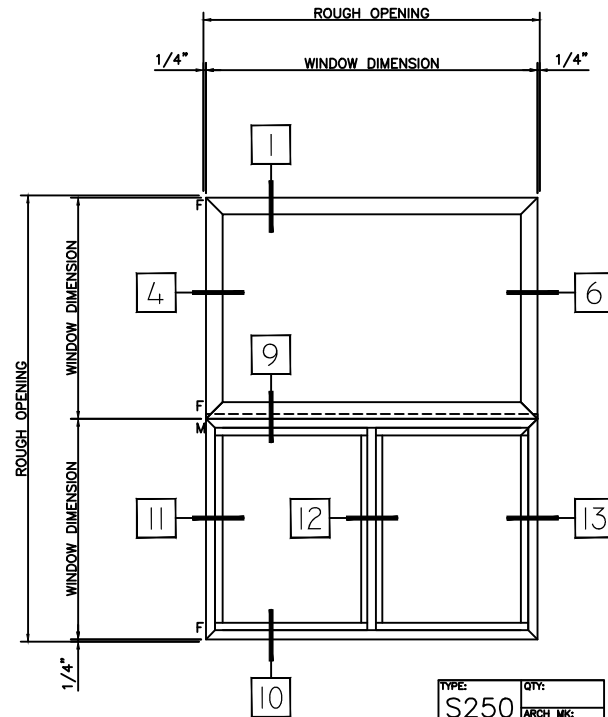
P: 417-235-7821
F: 417-737-7140
www.wintechinc.com



TYPE:	QTY:
S250	
ARCH MK:	
PRODUCT:	
FXD/FXD/FXD	

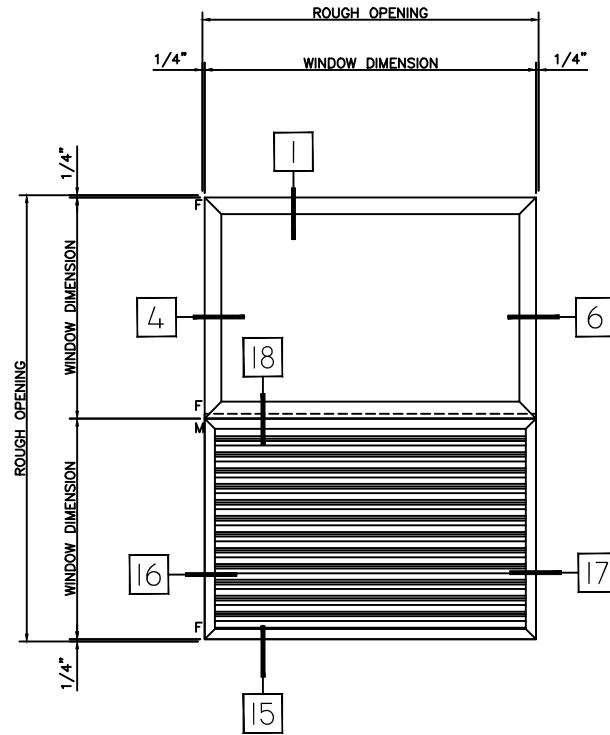


TYPE:	QTY:
S250	
ARCH MK:	
PRODUCT:	
FXD/FXD STACK	

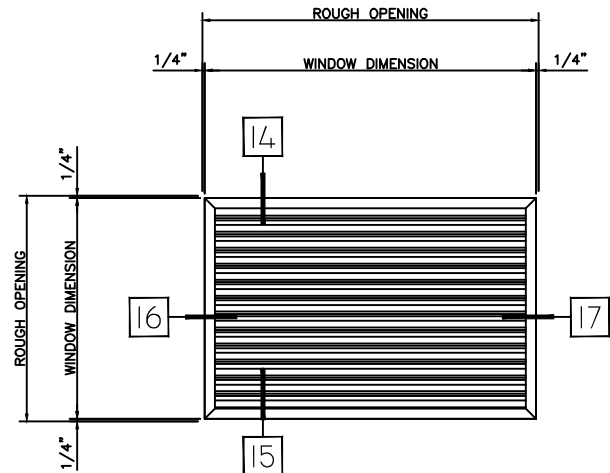


TYPE:	QTY:
S250	
ARCH MK:	
PRODUCT:	
FX/FX-FX OG STK	

HALF SCALE DETAILS

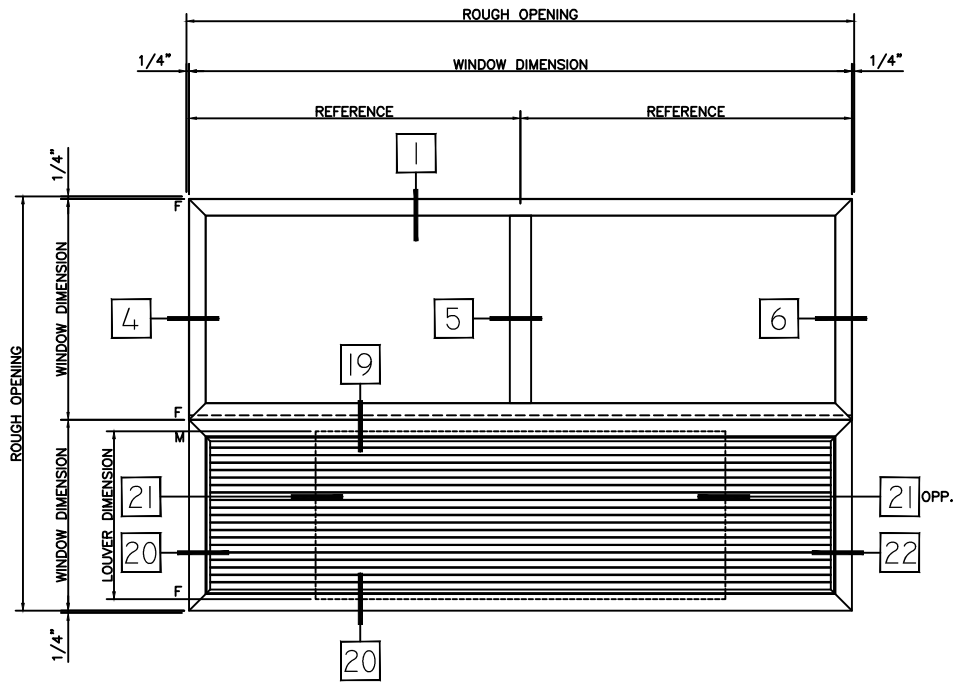


TYPE:	QTY:
S250	ARCH MK:
PRODUCT:	
FX IG/FX OG LOUVER	



TYPE:	QTY:
S250	ARCH MK:
PRODUCT:	
FX OG LOUVER	

HALF SCALE DETAILS



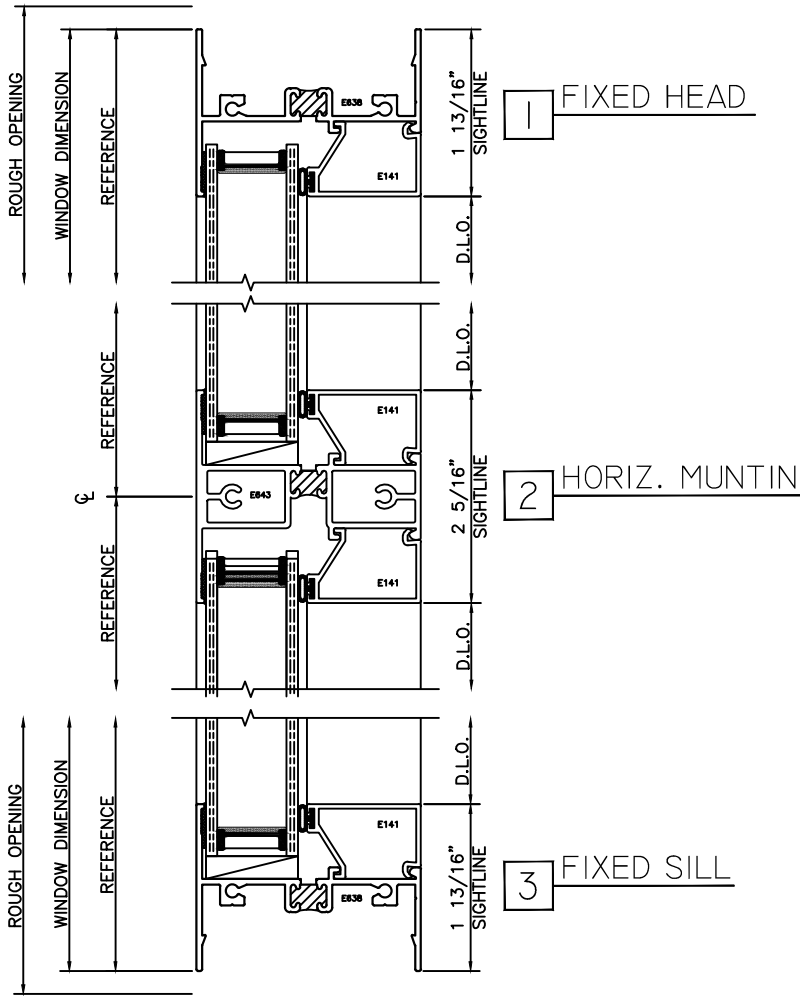
TYPE:	QTY:
S250	ARCH MK:
PRODUCT:	
FIXED-FIXED	
PTAC LOUVER	

HALF SCALE DETAILS

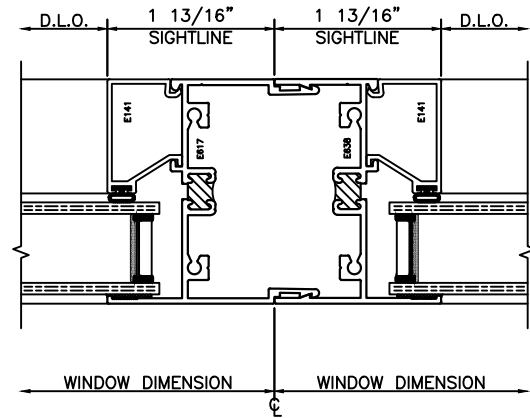
WINTeCH

P.O. BOX 480
 MONETT, MO 65708-0480

P: 417-235-7821
 F: 417-737-7140
 www.wintechinc.com



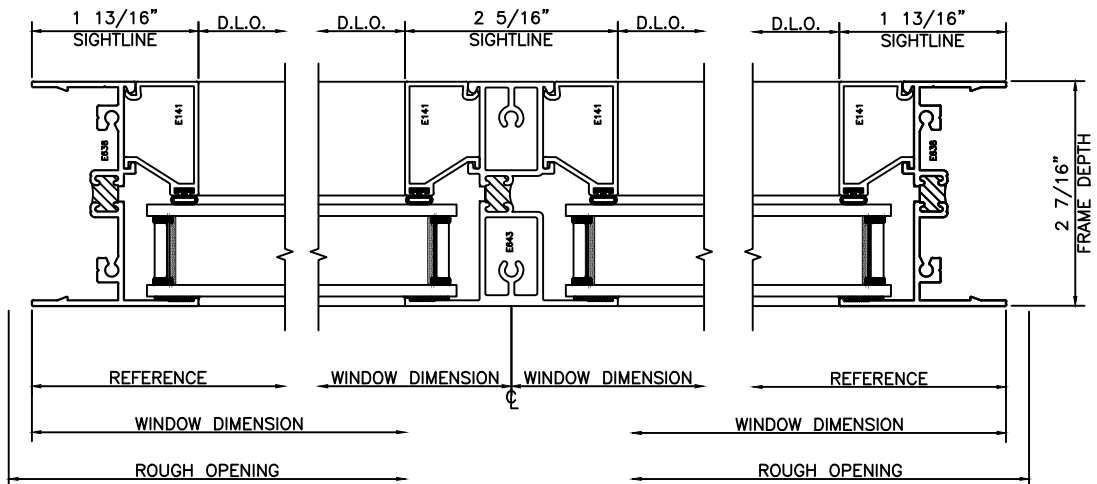
7 FIXED STACK
 VERTICAL STACKING JAMB



4 FIXED JAMB

5 VERT. MUNTIN

6 FIXED JAMB

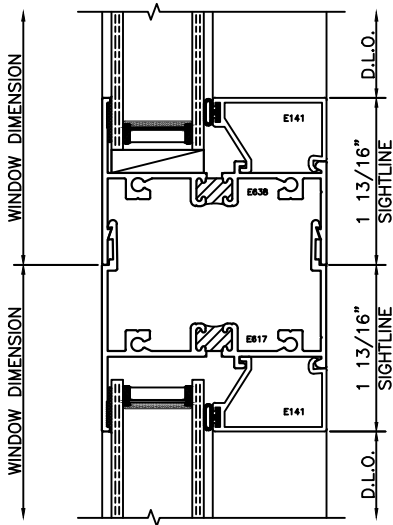


HALF SCALE DETAILS

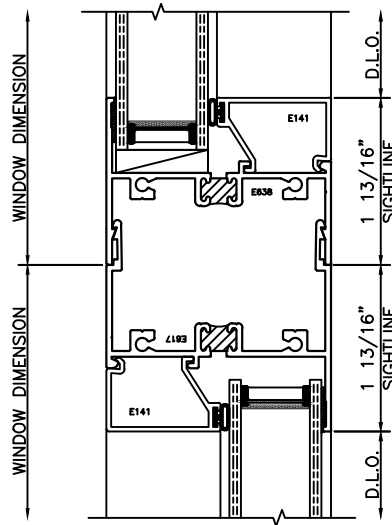
WINTeCH

P.O. BOX 480
MONETT, MO 65708-0480

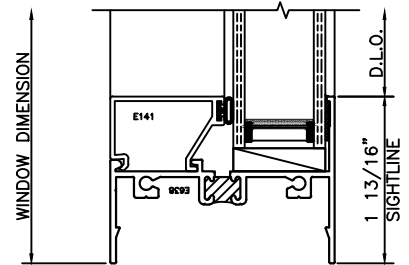
P: 417-235-7821
F: 417-737-7140
www.wintechinc.com



8 FIXED STACK
HORIZONTAL STACKING HEAD

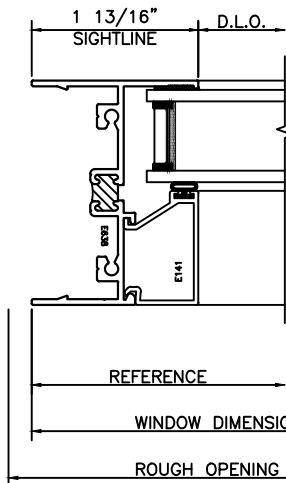


9 FIXED STACK
O.G. PANEL STACKING HEAD

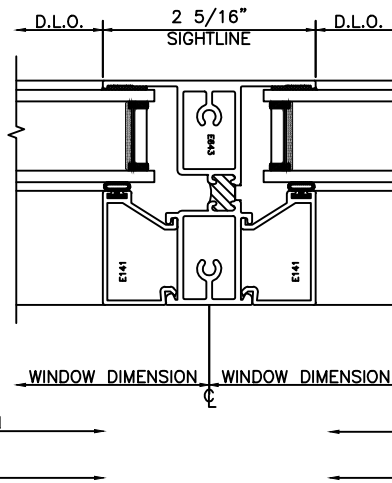


10 FIXED SILL
AT O.G. PANEL

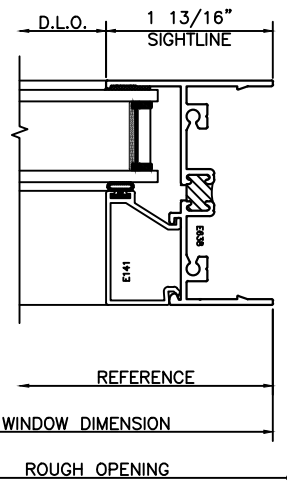
11 FIXED JAMB
OUTSIDE GLAZED



12 VERT. MUNTIN
OUTSIDE GLAZED



13 FIXED JAMB
OUTSIDE GLAZED

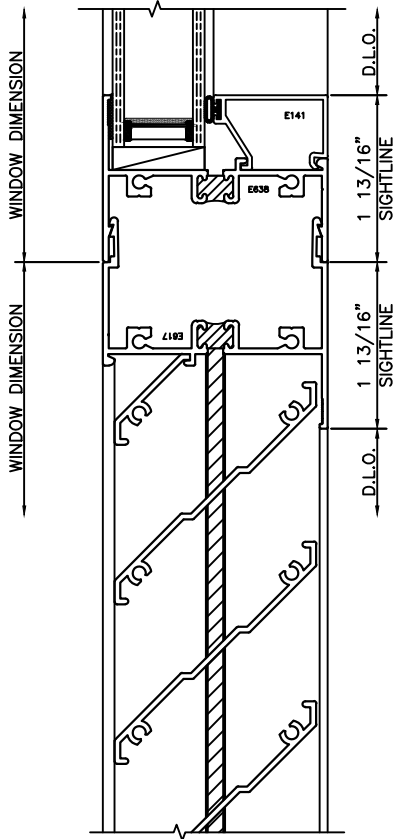


HALF SCALE DETAILS

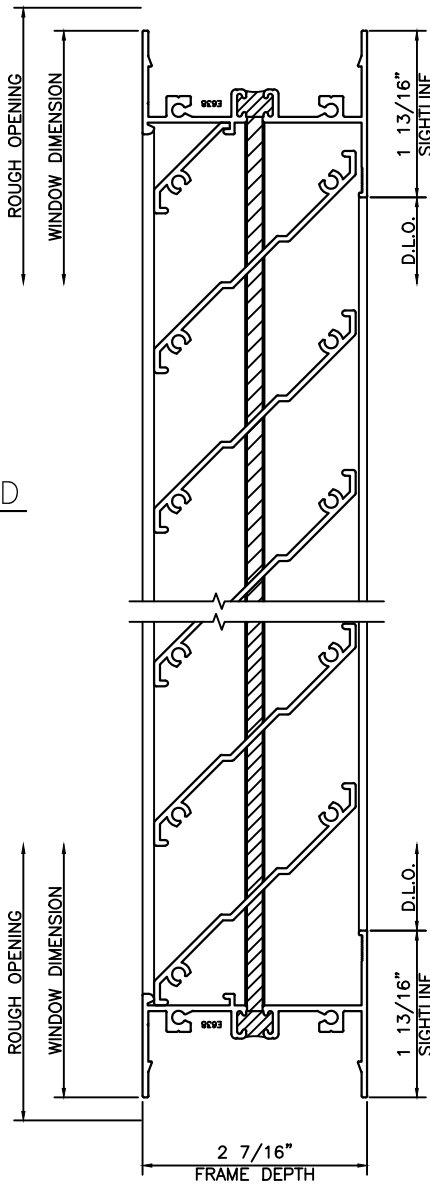
WINTECH

P.O. BOX 480
MONETT, MO 65708-0480

P: 417-235-7821
F: 417-737-7140
www.wintechinc.com



18 LOUVER HEAD
OUTSIDE GLAZED

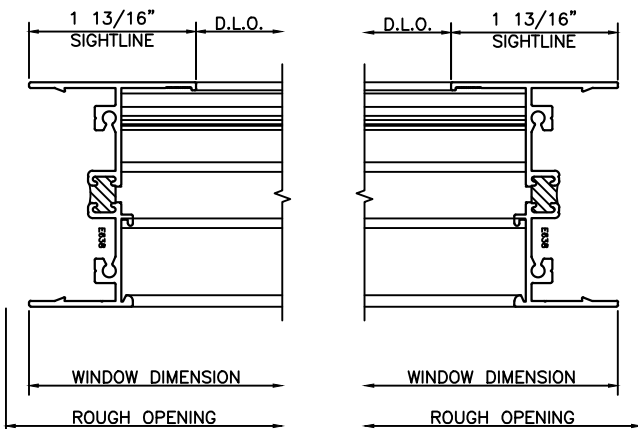


14 LOUVER HEAD
OUTSIDE GLAZED

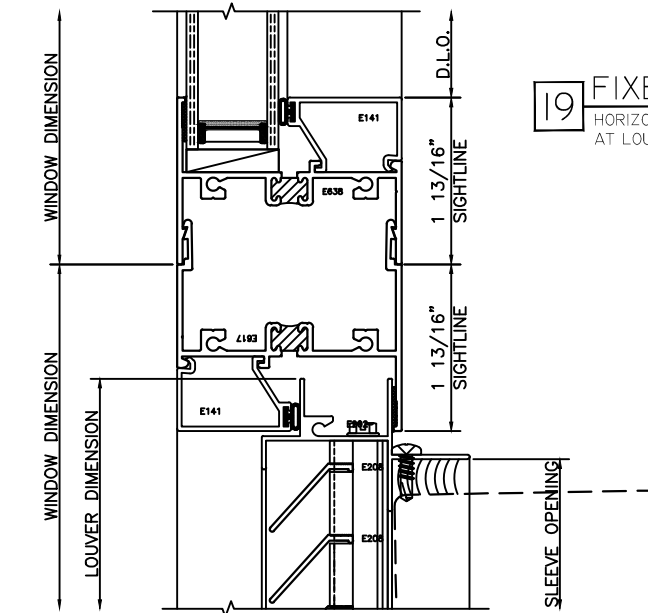
15 LOUVER SILL
OUTSIDE GLAZED

16 LOUVER JAMB
OUTSIDE GLAZED

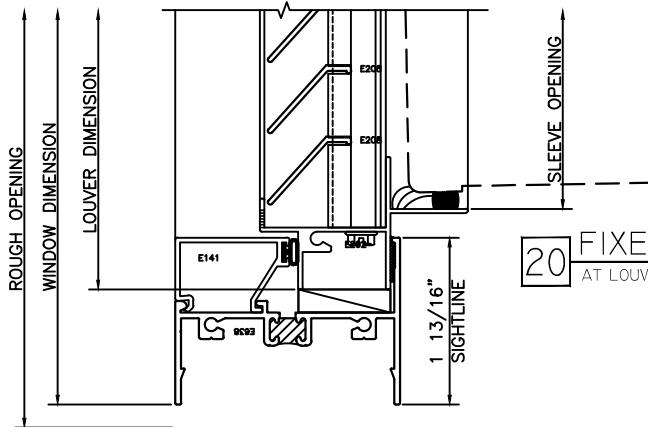
17 LOUVER JAMB
OUTSIDE GLAZED



HALF SCALE DETAILS



19 FIXED STACK
HORIZONTAL STACKING HEAD
AT LOUVER/PTAC

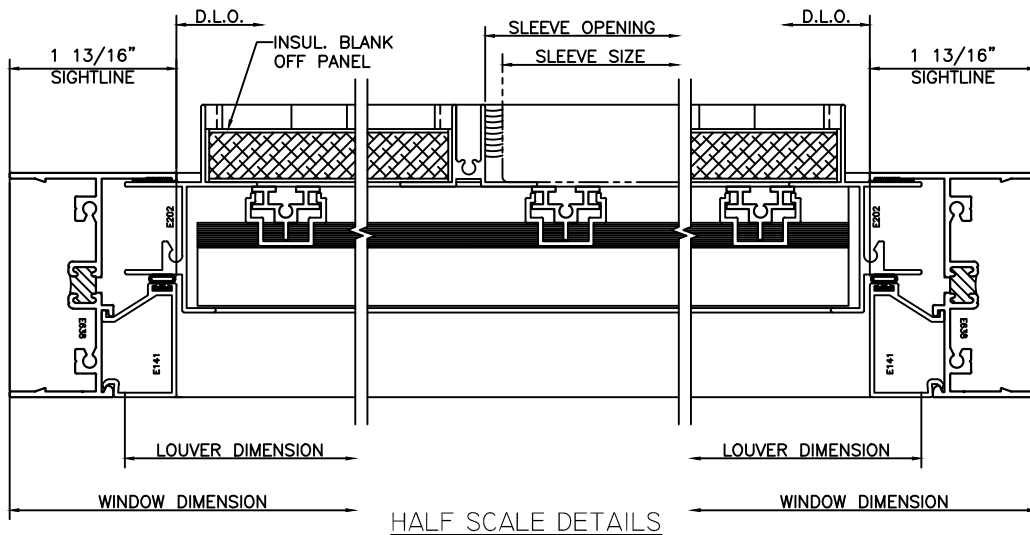


20 FIXED SILL
AT LOUVER/PTAC

21 LOUVER JAMB

22 LOUVER STRUT

23 LOUVER JAMB



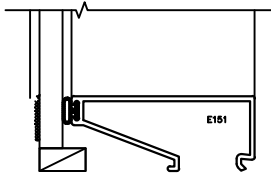
HALF SCALE DETAILS

WINTech

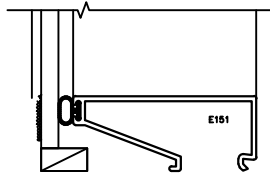
P.O. BOX 480
 MONETT, MO 65708-0480

P: 417-235-7821
 F: 417-737-7140
 www.wintechinc.com

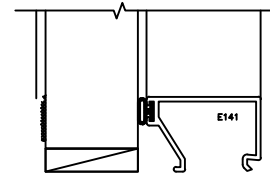
NOTE:
 ALL UNITS SHOWN ARE DIMENSIONALLY NOMINAL IN COMPONENT AND OVER ALL THICKNESS.
 PANELS ARE BUYOUT ITEMS NOT MANUFACTURED BY WINTech.
 CALL FOR AVAILABILITY OF NON-STANDARD GLAZING OPTIONS.



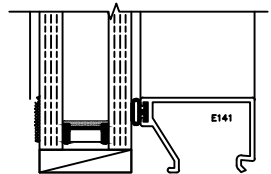
G1 1/4" NOM. GLAZING



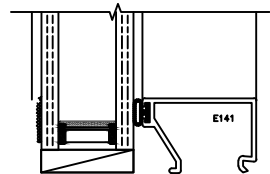
G2 3/16" NOM. GLAZING



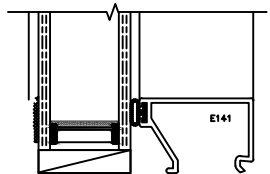
G3 1" INFILL BY OTHERS



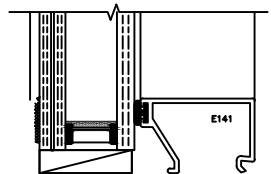
G4 1" INSUL. UNIT
 1/4" - 1/2" A.S. - 1/4"



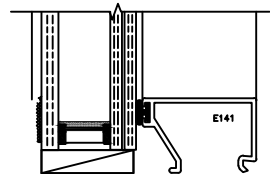
G5 1" INSUL. UNIT
 3/16" - 5/8" A.S. - 3/16"



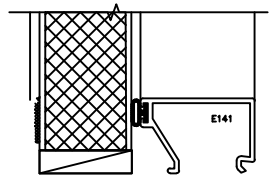
G6 1" INSUL. UNIT
 1/8" - 3/4" A.S. - 1/8"



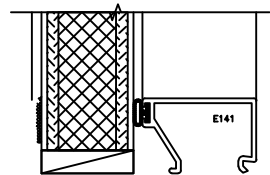
L1 1" INSUL. UNIT
 1/4" LAMI-(1/8"- .030 INNERLAYER-1/8")
 -1/2" A.S.-3/16"



L2 1" INSUL. UNIT
 3/16"-1/2" A.S.-1/4" LAMI-
 (1/8"- .030 INNERLAYER-1/8")



P1 1" NOM. INSUL. PANEL
 TYPICAL 3 PLY STYLE
 MAKE UP TO BE SPECIFIED



P2 1" NOM. INSUL. PANEL
 TYPICAL 5 PLY STYLE
 MAKE UP TO BE SPECIFIED

HALF SCALE DETAILS