

**S250 PROJECT OUT CASEMENT PERFORMANCE DATA:  
AAMA/WDMA/CSA 101/I.S.2/A440-08  
AAMA/WDMA/CSA 101/I.S.2/A440-11**

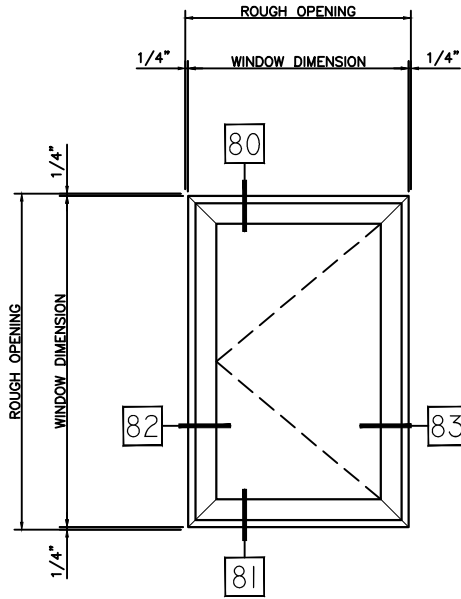
<b>Rating</b>	<b>CW-PG60-C</b>
<b>Air Infiltration</b>	<b>&lt;0.15 cfm/ft @ 1.57 psf</b>
<b>Water Resistance</b>	<b>**0 leakage at 12.0 lb</b>
<b>Structural Performance</b>	<b>+/- 90.00 psf</b>
<b>Thermally Broken</b>	<b>Yes</b>
<b>Frame Depth</b>	<b>2-1/2"</b>
<b>Infill Options</b>	<b>Maximum 1"</b>

**\*\* Optional Water                      0 leakage at 15.0 lb**

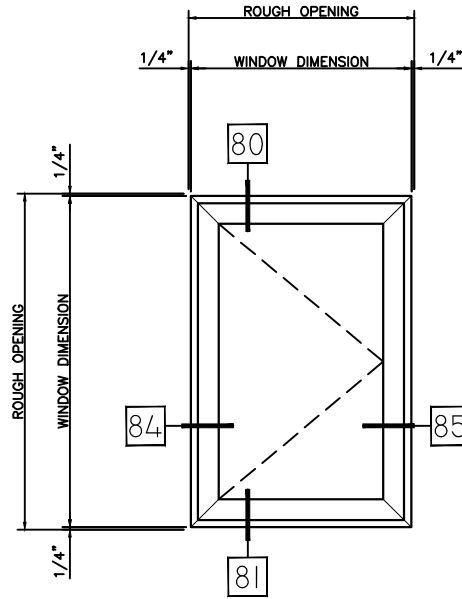
# WINTeCH

P.O. BOX 480  
 MONETT, MO 65708-0480

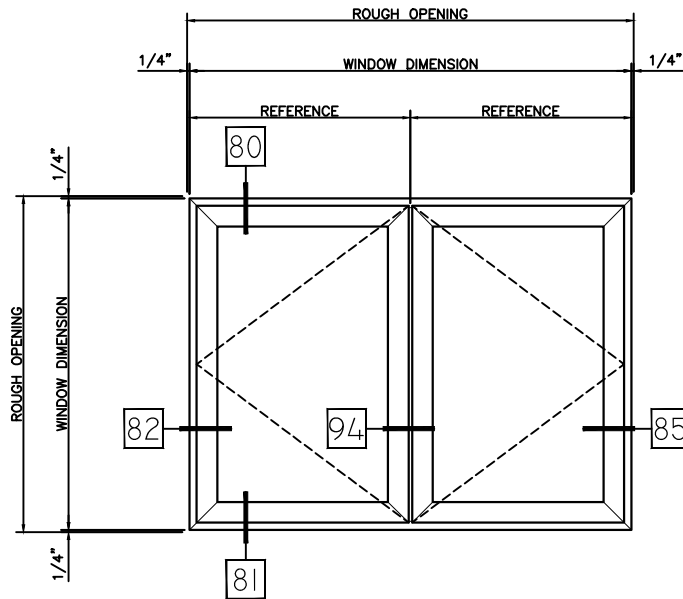
P: 417-235-7821  
 F: 417-737-7140  
 www.wintechinc.com



TYPE:	QTY:
S250	ARCH MK:
PRODUCT:	
COL	

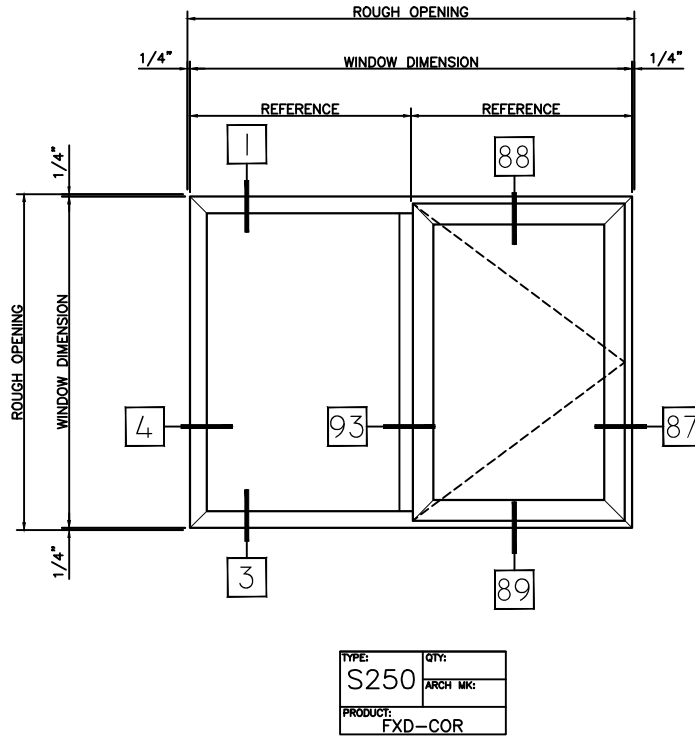
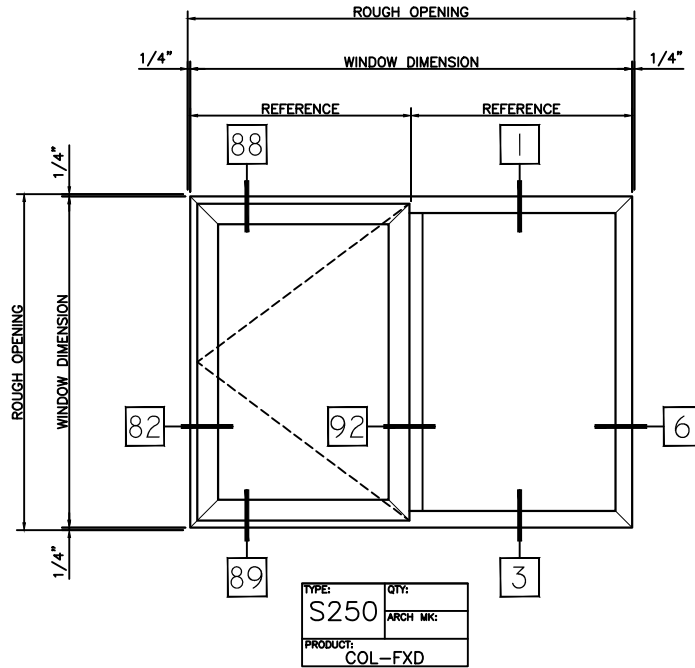


TYPE:	QTY:
S250	ARCH MK:
PRODUCT:	
COR	



TYPE:	QTY:
S250	ARCH MK:
PRODUCT:	
COL-COR	

HALF SCALE DETAILS

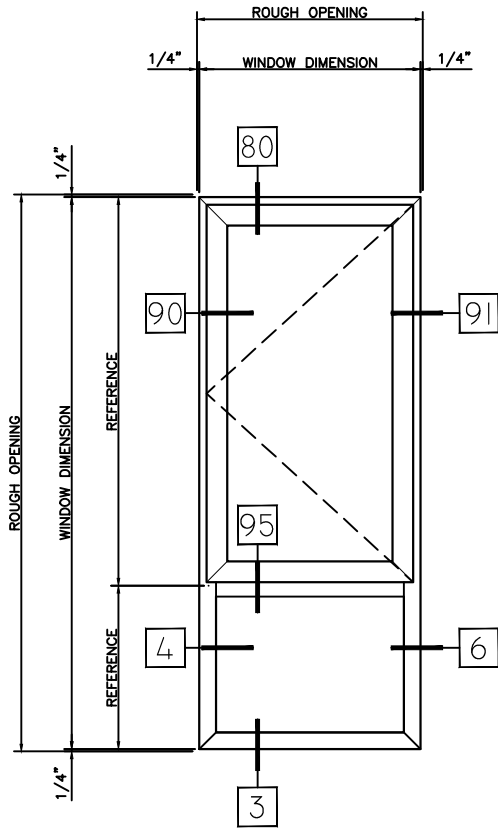


HALF SCALE DETAILS

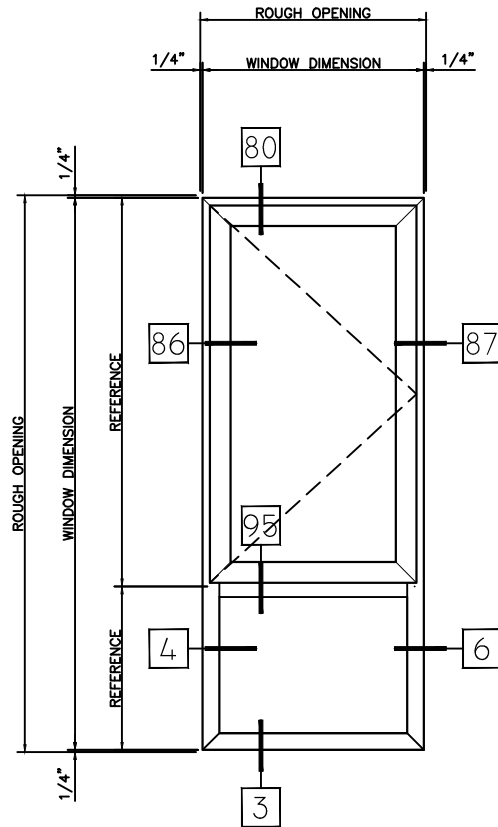
# WINTeCH

P.O. BOX 480  
 MONETT, MO 65708-0480

P: 417-235-7821  
 F: 417-737-7140  
 www.wintechinc.com



TYPE:	QTY:
S250	ARCH MK:
PRODUCT:	
COL/FXD	



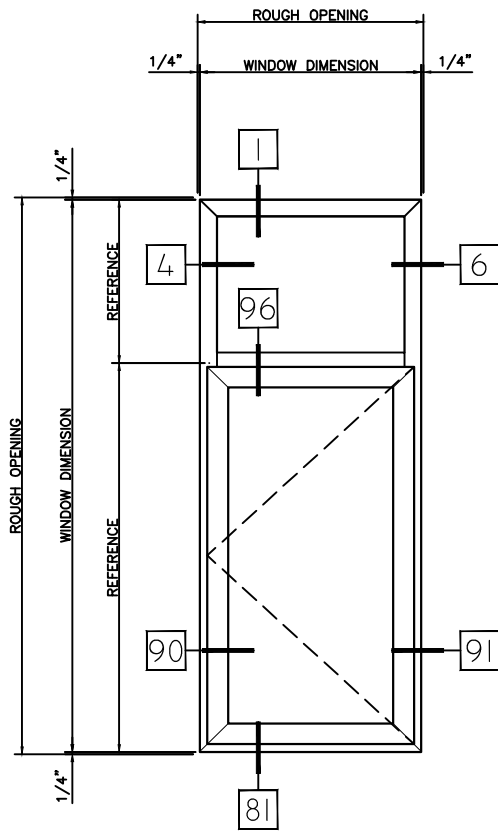
TYPE:	QTY:
S250	ARCH MK:
PRODUCT:	
COR/FXD	

HALF SCALE DETAILS

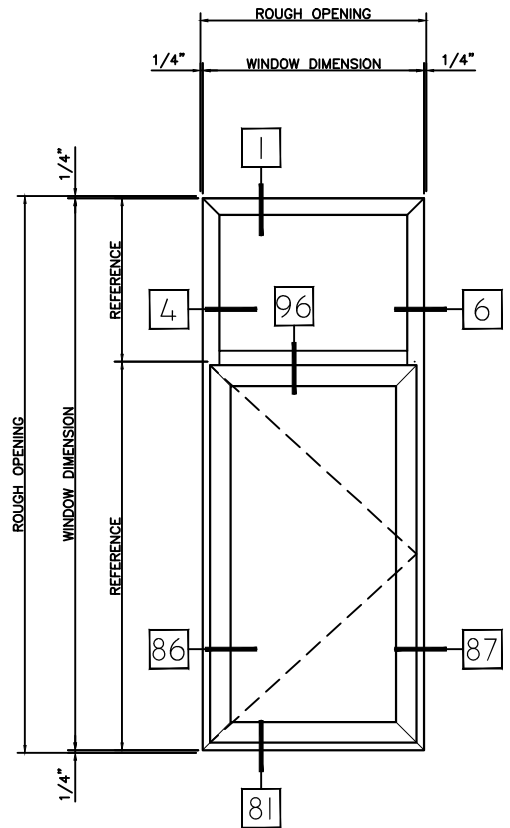
# WINTeCH

P.O. BOX 480  
 MONETT, MO 65708-0480

P: 417-235-7821  
 F: 417-737-7140  
 www.wintechinc.com



TYPE:	QTY:
S250	ARCH MK:
PRODUCT:	
FXD/COL	



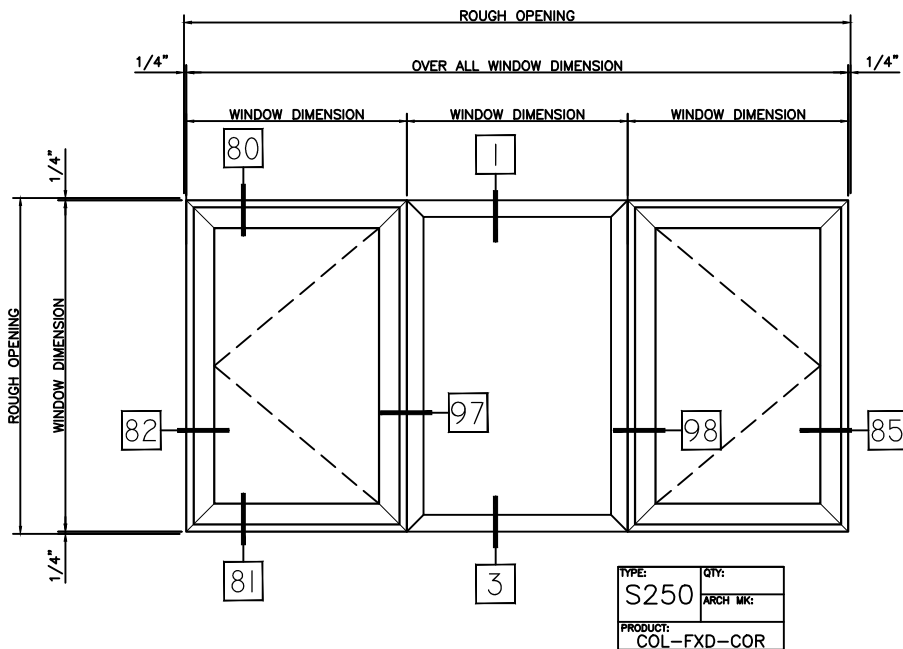
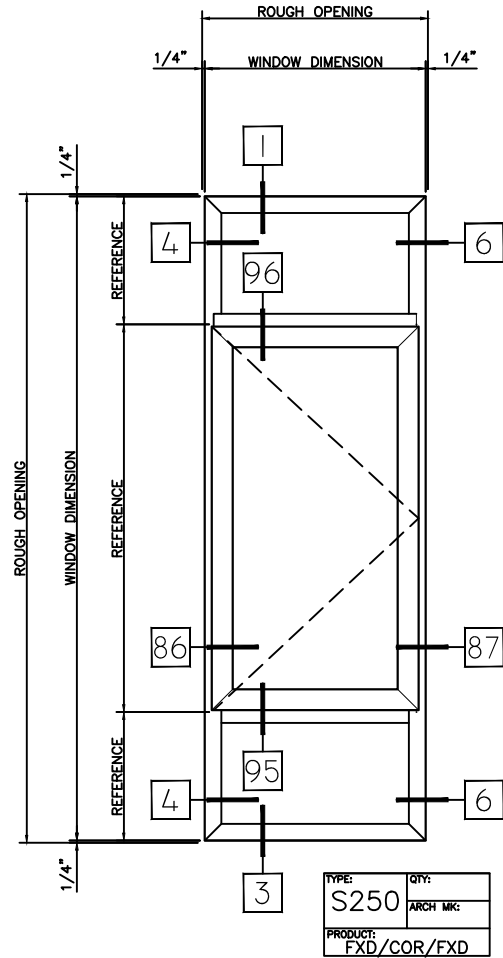
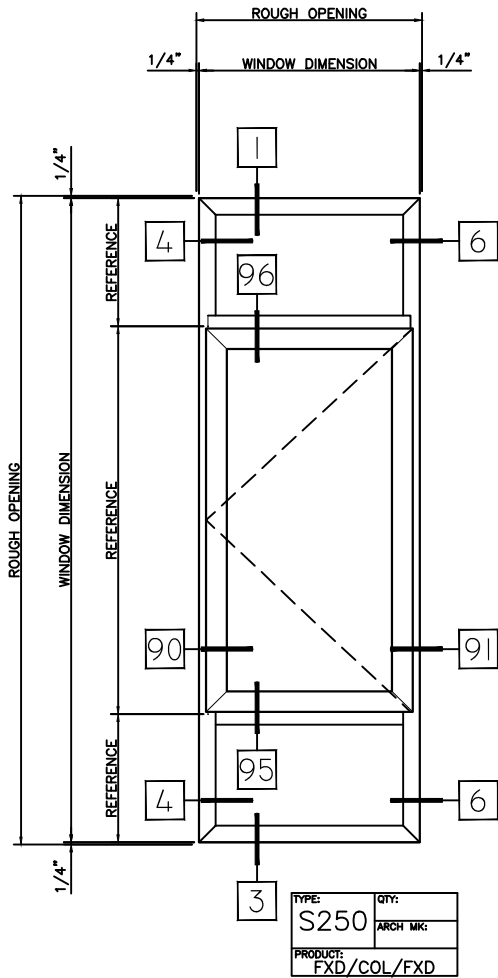
TYPE:	QTY:
S250	ARCH MK:
PRODUCT:	
FXD/COR	

HALF SCALE DETAILS

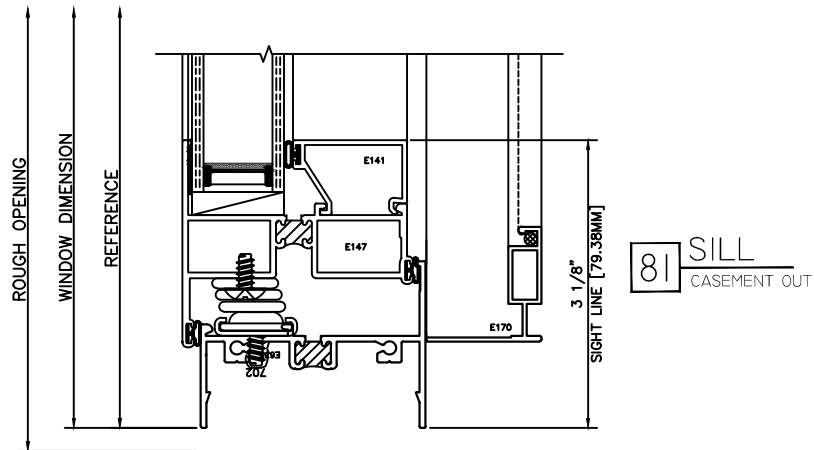
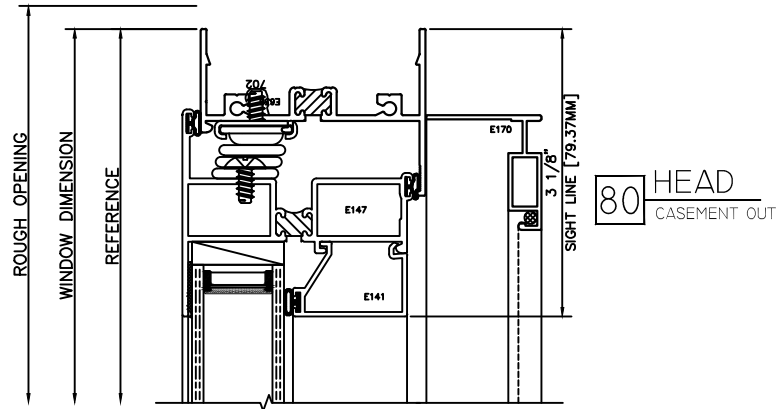
# WINTECH

P.O. BOX 480  
MONETT, MO 65708-0480

P: 417-235-7821  
F: 417-737-7140  
www.wintechinc.com

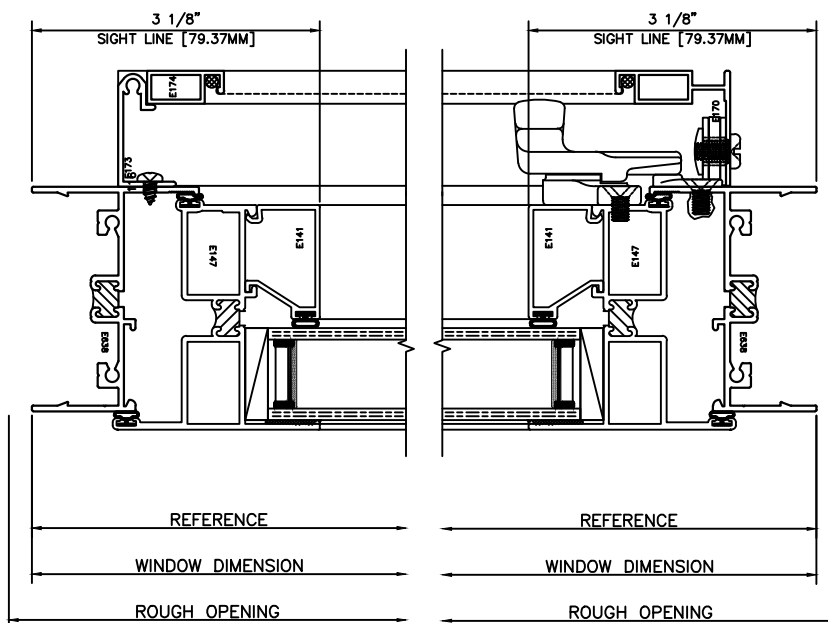


HALF SCALE DETAILS



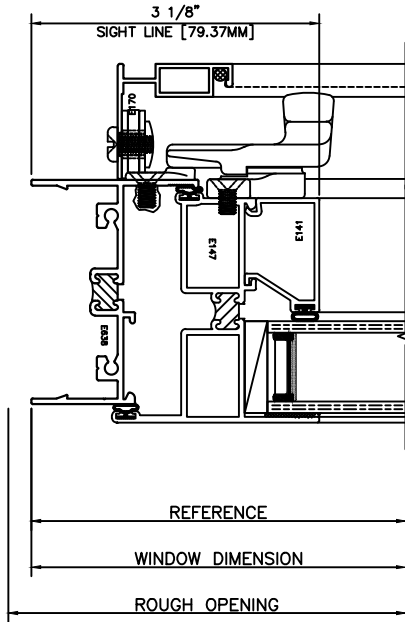
82 JAMB  
COL-HINGE RAIL

83 JAMB  
COL-LOCK RAIL

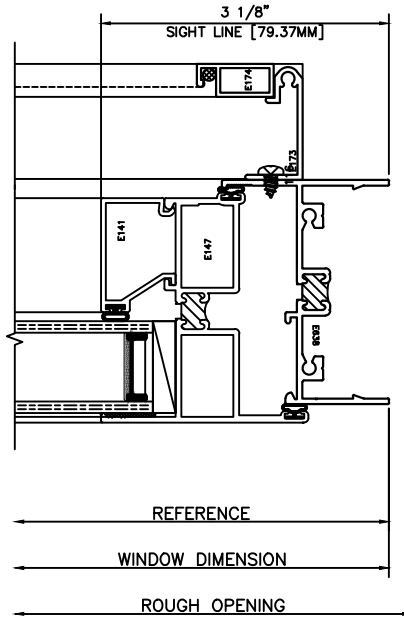


HALF SCALE DETAILS

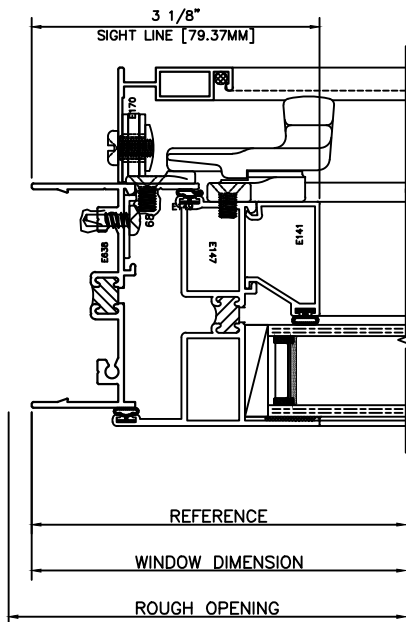
84 JAMB  
 COR-LOCK RAIL



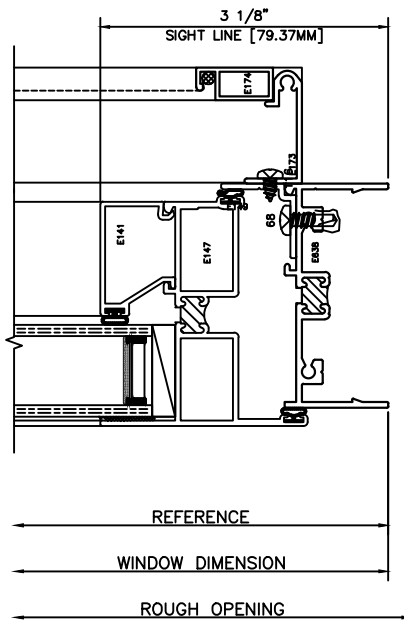
85 JAMB  
 COR-HINGE RAIL



86 JAMB  
 COR-LOCK RAIL



87 JAMB  
 COR-HINGE RAIL



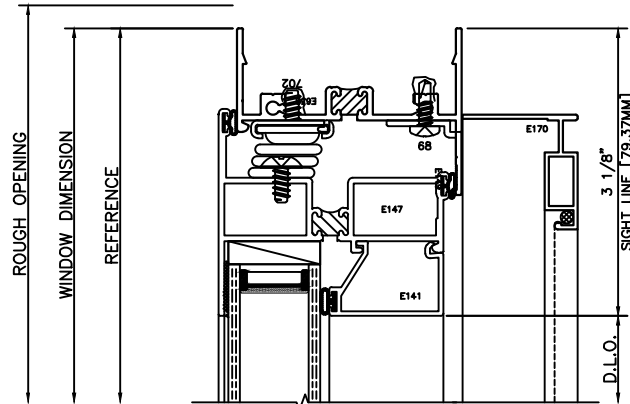
HALF SCALE DETAILS



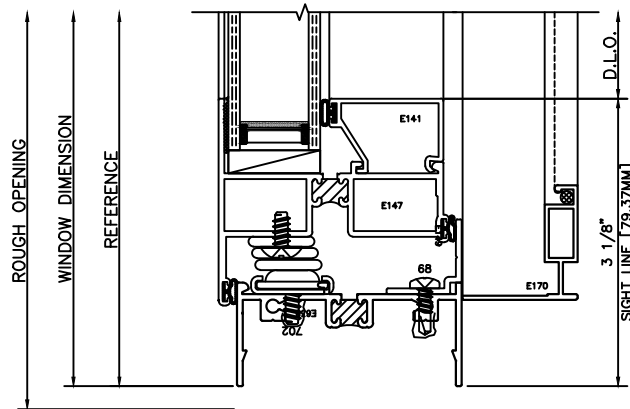
# WINTeCH

P.O. BOX 480  
MONETT, MO 65708-0480

P: 417-235-7821  
F: 417-737-7140  
www.wintechinc.com



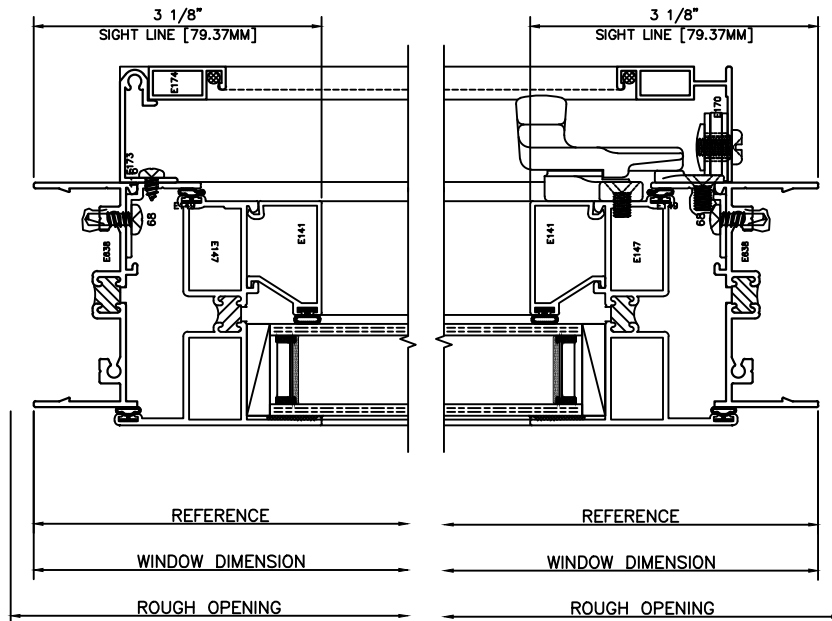
**88** HEAD  
CASEMENT OUT



**89** SILL  
CASEMENT OUT

**90** JAMB  
COL-HINGE RAIL

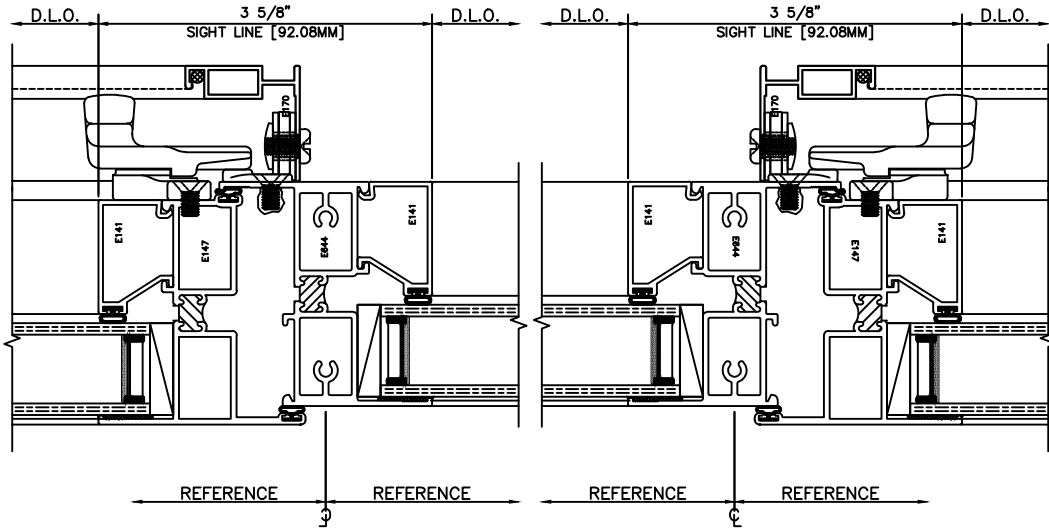
**91** JAMB  
COL-LOCK RAIL



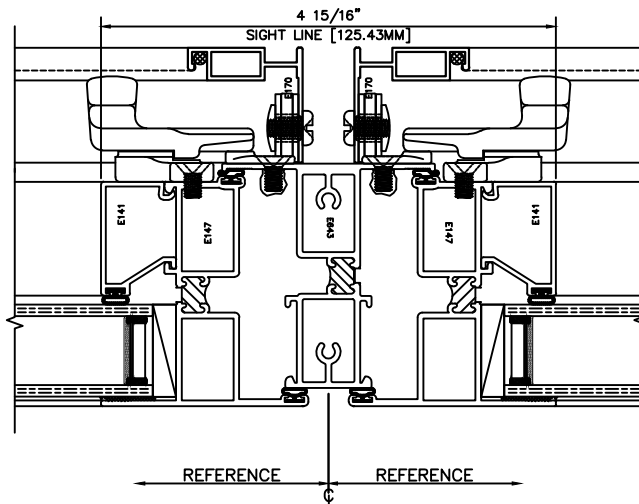
HALF SCALE DETAILS

92 MTG RAIL  
COL LOCK RAIL-FXD

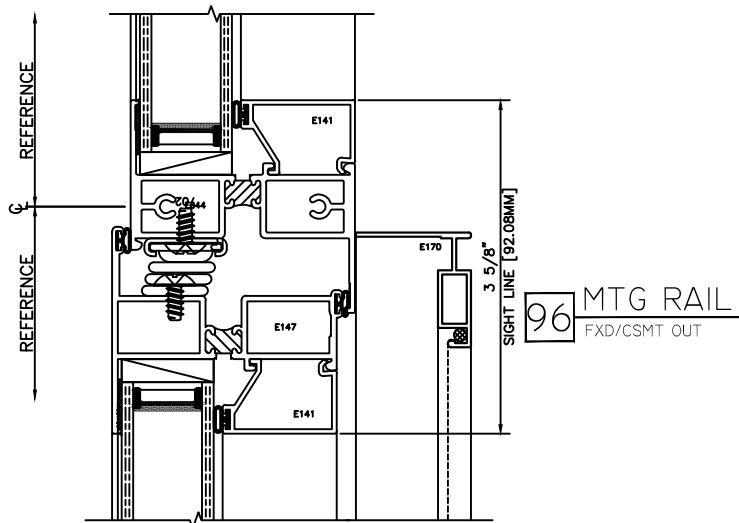
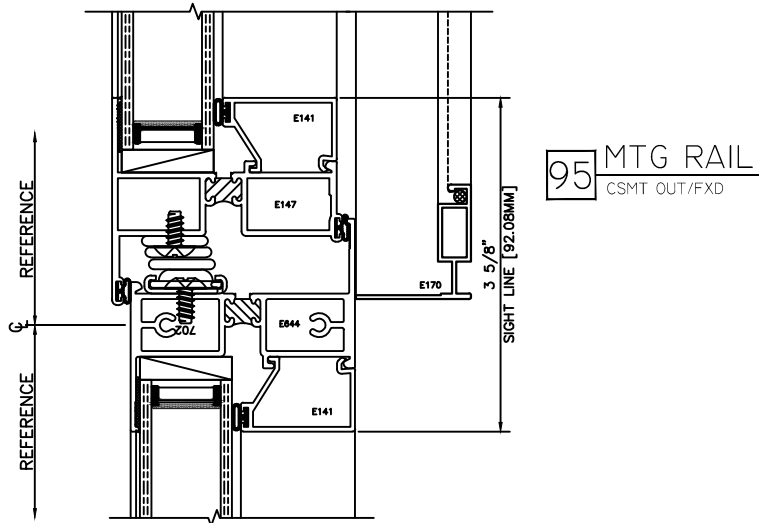
93 MTG RAIL  
FXD-COR LOCK RAIL



94 MTG RAIL  
COL-COR  
LOCK RAIL

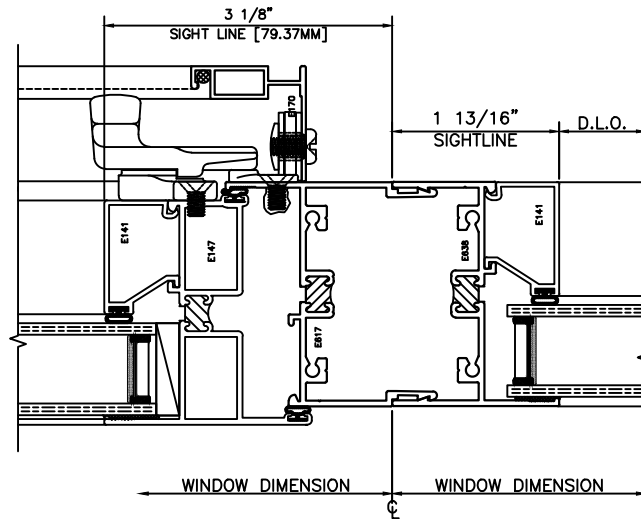


HALF SCALE DETAILS

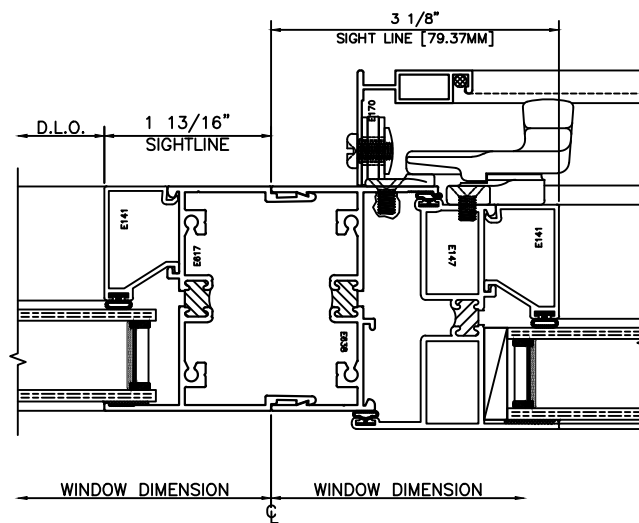


HALF SCALE DETAILS

## 97 STACK JAMB COL LOCK RAIL-FIXED



## 98 STACK JAMB FIXED-COR LOCK RAIL



HALF SCALE DETAILS