

PDL

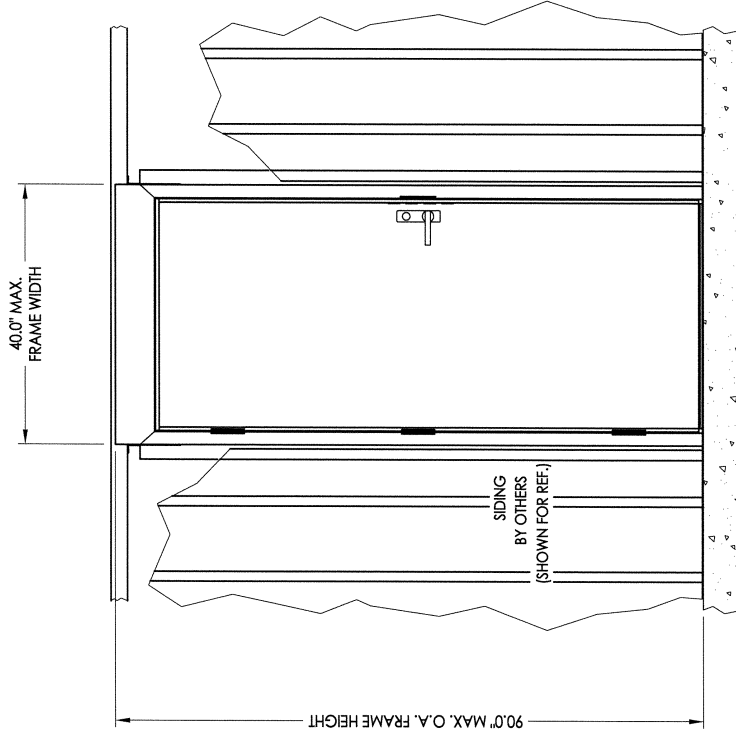
Building Products
31393 Industrial Parkway
North Olmsted, OH 44070

PRE-ASSEMBLED METAL WALL SINGLE DOOR OUTSWING "IMPACT"

GENERAL NOTES

- This product has been evaluated and is in compliance with the 5th Edition (2014) Florida Building Code (FBC) structural requirements excluding the "High Velocity Hurricane Zone" (HVHZ).
- Product anchors shall be as listed and spaced as shown on details. Anchor embedment to base material shall be beyond wall dressing or stucco.
- When used in areas requiring wind borne debris protection this product complies with Section 1609.1.2 of the FBC and does not require an impact resistant covering. This product meets missile level "D" and includes Wind Zone 4 as defined in ASTM E 1996 and Section 1609.1.2.2 of the FBC.
- Site conditions that deviate from the details of this drawing require further engineering analysis by a licensed engineer or registered architect.
- Main wind force resisting system (MWFRS) component spacing to be determined by others.
- Engineer of Record shall evaluate the sub-jamb for additional windloads from components and cladding elements such as wall panels and intermediate girts.

TABLE OF CONTENTS	
SHEET#	DESCRIPTION
1	Typical elevations, design pressures & general notes
2	Door panel details
3	Vertical & horizontal cross sections
4	Frame anchoring details
5	Bill of materials & components



3070 PRE-ASSEMBLED DOOR ELEVATION
(Metal building installation)

OVERALL FRAME DIMENSION	DESIGN PRESSURE (PSF)	
	POSITIVE	NEGATIVE
40.0" x 90.0"	+70.0	-70.0

L. F. SCHMIDT
PROFESSIONAL ENGINEER
FLORIDA
No. 43409

Documents Prepared By:
Lyndon F. Schmidt
P.E. No. 43409

BUILDING CONSULTANTS, INC.
P.O. Box 230, Vero Beach, FL 33595
Phone No.: 813.659.9197
FBPE C.A. No. 9813

PRODUCT: PDL BUILDING PRODUCTS
PRE-ASSEMBLED METAL WALL DOOR

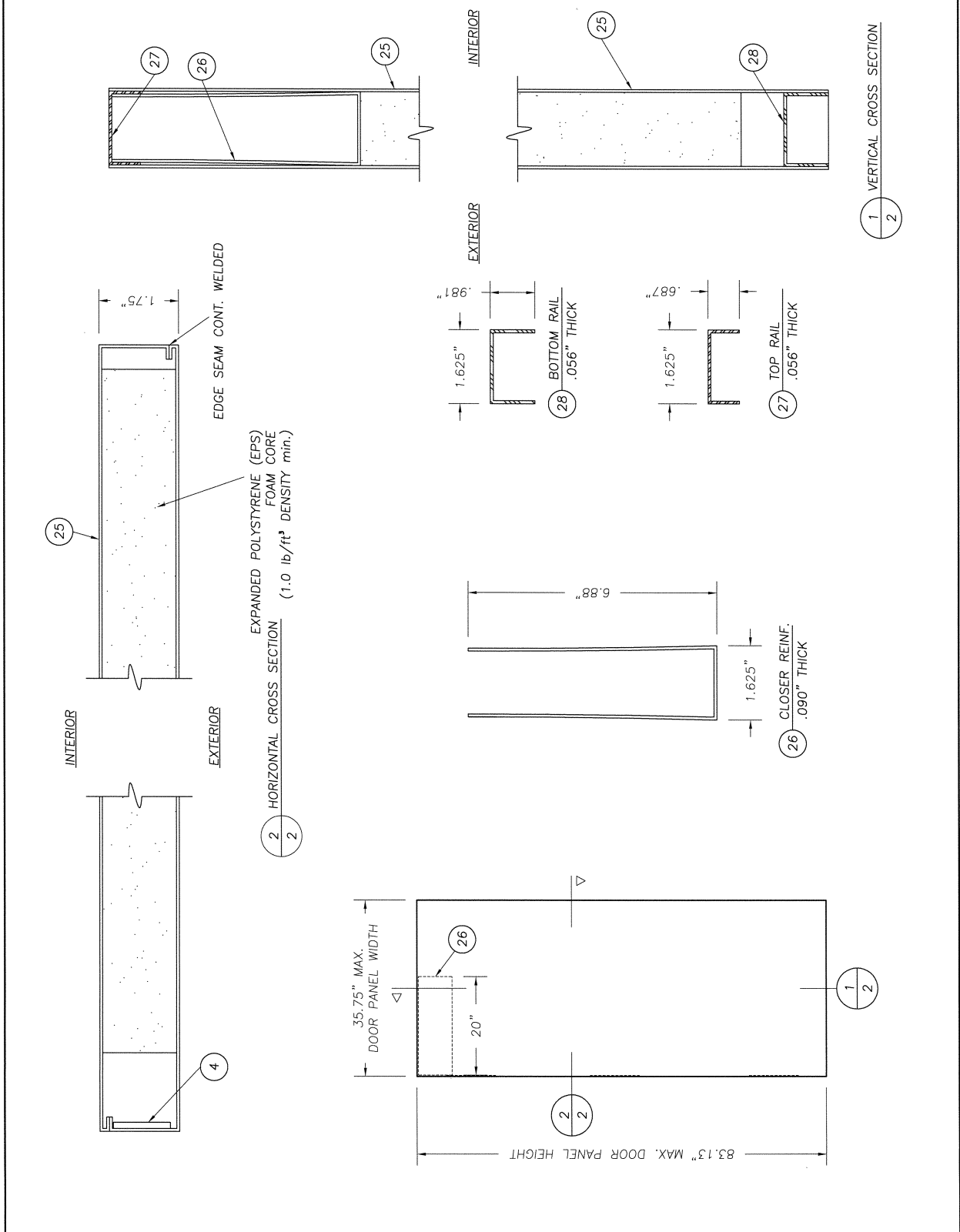
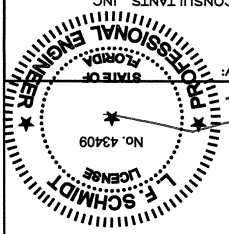
PART OR ASSEMBLY:
TYPICAL ELEVATION, DESIGN PRESSURES & GENERAL NOTES

NO.	DATE	BY
1	4/23/15	JK
	UPDATE TO 5TH ED. (2014) FBC	

DATE: 08/12/08
SCALE: N.T.S.
DWG. BY: JK
CHK. BY: LFS
DRAWING NO.: FL-7796.1
SHEET 1 of 5

REVISIONS	
NO.	DATE
1	4/23/15
UPDATE TO 5TH ED. (2014) FBC	
BY	JK
PART OR ASSEMBLY:	
METAL WALL DOOR	
PRE-ASSEMBLED	
PDL BUILDING PRODUCTS	
PRODUCT:	

Documents Prepared By: Lydon F. Schmidt
 P.E. No. 43409
 BUILDING CONSULTANTS, INC.
 P.O. Box 230, Vero Beach, FL 33595
 Phone No.: 813.659.9197
 FBPE C.A. No. 9813



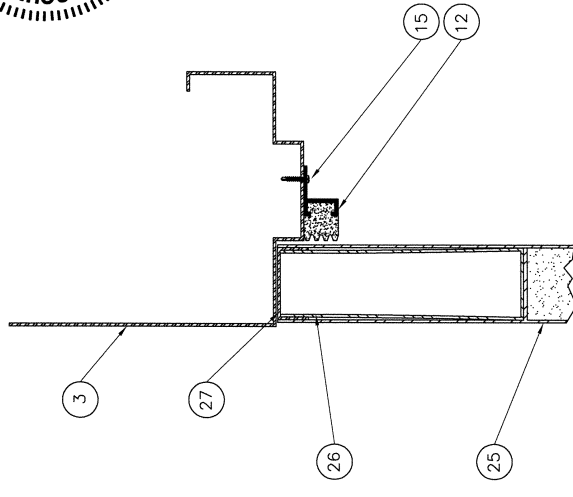
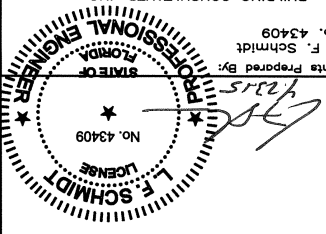
1 VERTICAL CROSS SECTION
 2

2 HORIZONTAL CROSS SECTION
 2

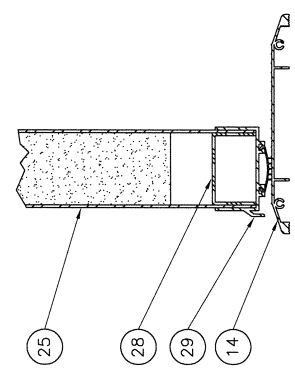
REVISIONS	
NO.	DATE
1	4/23/15
UPDATE TO 5TH ED. (2014) FBC	
BY	JK
DATE	08/12/08
SCALE: N.T.S.	
DWG. BY: JK	
CHK. BY: LFS	
DRAWING NO.: FL-7796.1	
SHEET 3 OF 5	

PRODUCT: PDL BUILDING PRODUCTS
 PRE-ASSEMBLED METAL WALL DOOR
 PART OR ASSEMBLY: VERTICAL & HORIZONTAL CROSS SECTIONS

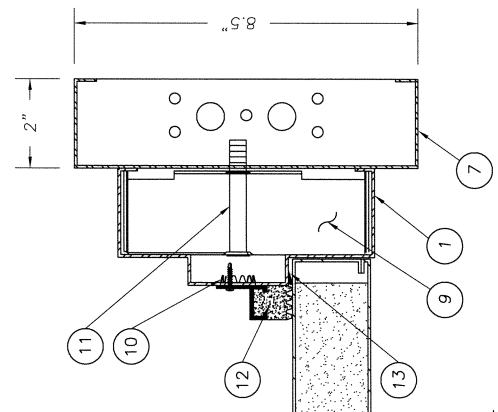
Documents Prepared By: Lyndon F. Schmidt
 P.E. No. 43409
 L.F. SCHMIDT
 PROFESSIONAL ENGINEER
 FLORIDA
 LICENSE No. 43409
 R.W. BUILDING CONSULTANTS, INC.
 P.O. Box 230, Vero Beach, FL 33595
 Phone No.: 813.659.9197
 FBPE C.A. No. 9813



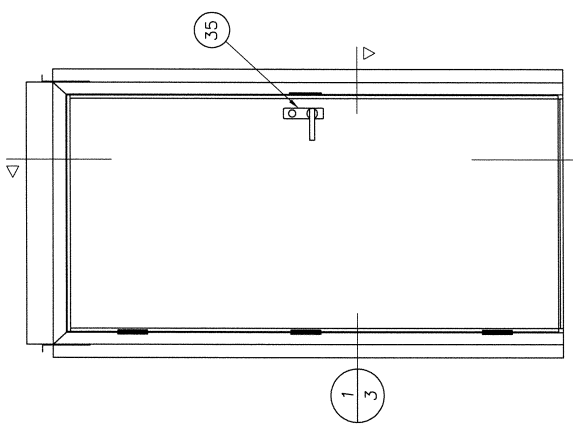
2 VERTICAL CROSS SECTION
 3 HEADER, DOOR AND SILL



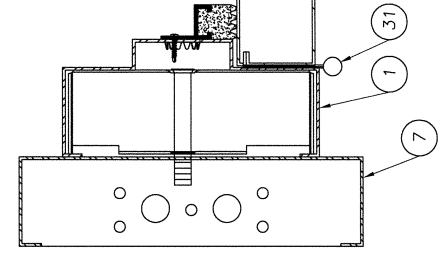
2 VERTICAL CROSS SECTION
 3 HEADER, DOOR AND SILL



1 HORIZONTAL CROSS SECTION
 3 THRU DOOR AND JAMBS



PRE-ASSEMBLED DOOR UNIT



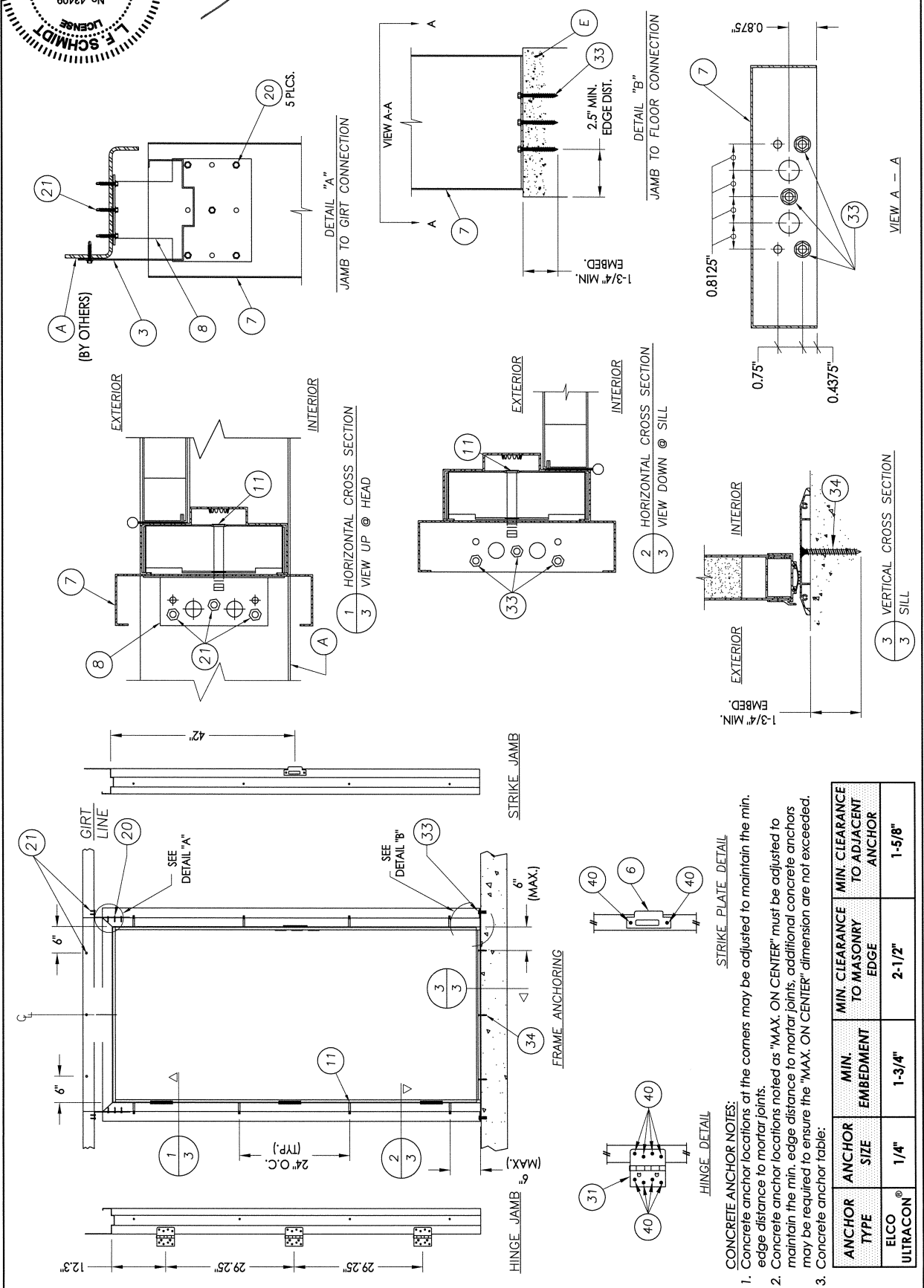
1 HORIZONTAL CROSS SECTION
 3 THRU DOOR AND JAMBS

NO.	DATE	REVISIONS
1	4/23/15	UPDATE TO 5TH ED. (2014) FBC
		BY JK

DATE: 08/12/08
 SCALE: N.T.S.
 DWG. BY: JK
 CHK. BY: LFS
 DRAWING NO.: FL-7796.1
 SHEET 4 of 5

PRODUCT: PDL BUILDING PRODUCTS
 PRE-ASSEMBLED METAL WALL DOOR
 PART OR ASSEMBLY: FRAME ANCHORING DETAILS

Documents Prepared By: Lyndon F. Schmidt
 P.E. No. 43409
 PROFESSIONAL ENGINEER
 STATE OF FLORIDA
 No. 43409
 L. SCHMIDT
 LICENSE

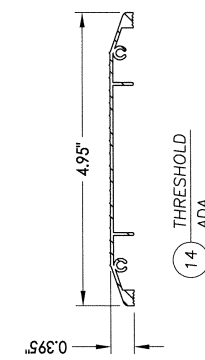
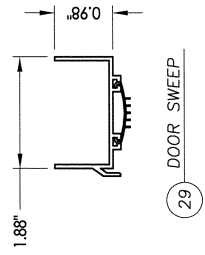
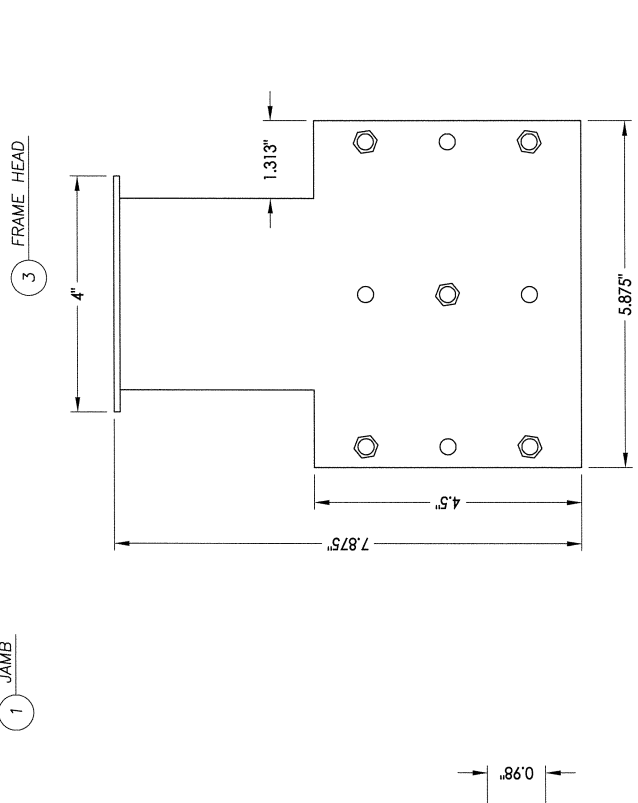
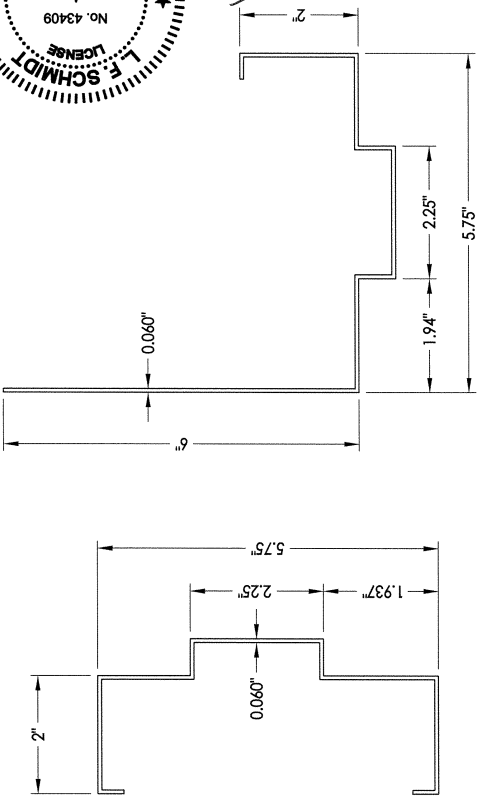


CONCRETE ANCHOR NOTES:

- Concrete anchor locations at the corners may be adjusted to maintain the min. edge distance to mortar joints.
- Concrete anchor locations noted as "MAX. ON CENTER" must be adjusted to maintain the min. edge distance to mortar joints. additional concrete anchors may be required to ensure the "MAX. ON CENTER" dimension are not exceeded.
- Concrete anchor table:

ANCHOR TYPE	ANCHOR SIZE	MIN. EMBEDMENT	MIN. CLEARANCE TO MASONRY EDGE	MIN. CLEARANCE TO ADJACENT ANCHOR	MIN. CLEARANCE TO ANCHOR
ELCO ULTRACON®	1/4"	1-3/4"	2-1/2"	1-5/8"	

ITEM #	DESCRIPTION	MATERIAL
A	STEEL SUBSTRATE - 0.100" MIN. THICK. (ASTM A653, Fy=33KSI, Fu=45KSI)	STEEL
E	3,000 PSI MIN. CONCRETE CONFORMING TO ACI 301	CONCRETE
1	AMWELD 400 SERIES JAMB (16 GA. MIN.)	STEEL
3	AMWELD 400 SERIES HEADER (16 GA. MIN.)	STEEL
4	HINGE REINFORCING (10 GA. MIN.)	STEEL
6	ANSI UNIV. STRIKE REINF. (14 GA. MIN.)	STEEL
7	PDL 16 GA. GALV. SUB JAMBS	STEEL
8	PDL 16 GA. GALV. L-BRACKETS (ASTM A653, Fy=33KSI, Fu=45KSI)	STEEL
9	COMPLETED OPENING ANCHORS (16 GA. MIN.)	STEEL
10	PLASTIC SNAP-IN HOLE PLUGS	PLASTIC
11	5/16" - 18 x 2-1/2" BOLT w/ WASHER AND FIN HEX NUT	STEEL
12	HAGER 8615 MIL NEOPRENE WEATHERSTRIP	NEOPRENE
13	HAGER 736 WEATHERSTRIP	NEOPRENE
14	COLUMBIA ALUMINIUM 6510 THRESHOLD	ALUM
15	#10 x 1" PH SELF-DRILLING SMS	STEEL
20	#10 x 1-1/4" TEK SCREW	STEEL
21	#12 x 1" HILTI KWIK-FLEX SELF-DRILLING SCREW	STEEL
25	20 GA. STEEL DOOR PANELS	STEEL
26	CLOSER REINFORCEMENT	STEEL
27	END CLOSURE - TOP	STEEL
28	END CLOSURE - BOTTOM	STEEL
29	COLUMBIA ALUMINIUM 2580 SWEEP	ALUM
31	GULFPORT GBB79 4.5 x 4.5 BALL BEARING NRP HINGE	STEEL
33	1/4" x 2-1/4" ELCO HWH CONCRETE SCREW	STEEL
34	1/4" x 2-1/4" ELCO PFH CONCRETE SCREW	STEEL
35	YALE 8700 SERIES MORTISE LOCK	STEEL
40	#12 x 3/4" PFH MACHINE SCREW	STEEL



8 "L" BRACKET
12 GA.

Documents Prepared By: *[Signature]*
LynDon F. Schmidt
P.E. No. 43409
PROFESSIONAL ENGINEER
FLORIDA
No. 43409
L.F. SCHMIDT
LICENSE

[Signature]
BUILDING CONSULTANTS, INC.
P.O. Box 230, Valrico, FL 33595
Phone No.: 813.659.9197
FBPE C.A. No. 9813

PRODUCT: PDL BUILDING PRODUCTS
PRE-ASSEMBLED METAL WALL DOOR
PART OR ASSEMBLY:
BILL OF MATERIALS & COMPONENTS

NO	DATE	REVISIONS
1	4/23/15	UPDATE TO 5TH ED. (2014) FBC

DATE: 08/12/08
SCALE: N.T.S.
DWG. BY: JK
CHK. BY: LFS
DRAWING NO.: FL-7796.1
SHEET 5 OF 5