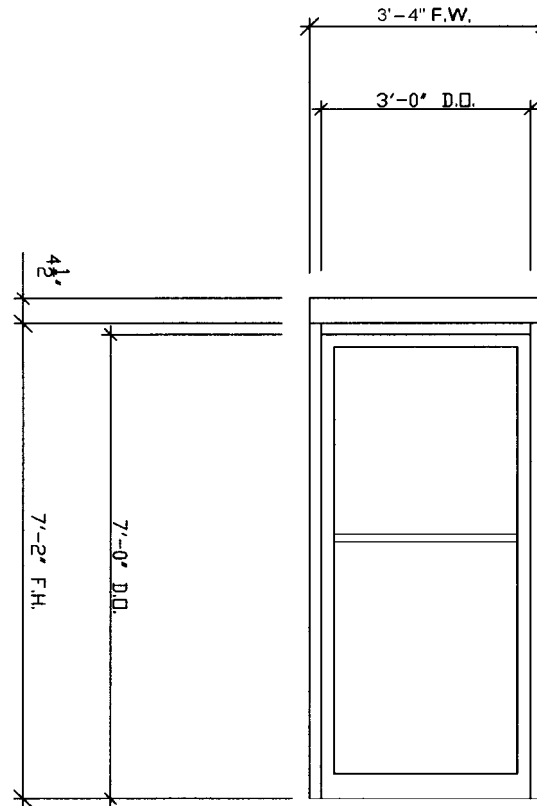


**PDL Building Products  
3070 Standard Pre-assembled Storefront System**



**3070 Standard Pre-assembled Storefronts Include The Following Components:**

**Vistawall Parts Included:**

- 212 Narrow Stile Door
- 3000 Series Frame 2" x 4 1/2"
- Adams Rite 1850-A-505 Lock
- CY-1 Cylinder
- PH-10 Pull Handle
- PH-11 Push Bar
- Standard Offset Pivot Assembly
- Standard 1/2" x 4" Threshold

**PDL Assembly Included:**

**Glazing Options:**

- Glass Shall Either be 1" Insulated or 1/4" Tempered
- Clear or Tinted Glass in Either Option is Available
- Glazing Stop Sections shall have a .050" Wall Thickness
- All Units shall be Dry Glazed with Extruded Pressure Fitting Aluminum Glazing Stops and Rubber Gasket

**Hardware:**

- Dorma 7400 Series Closer – Grade 1 with Standard Duty Parallel Arm
- Door Sweep with Drip Cap

**Packaging:**

- The Entire Door Order is Packaged in a Heavy Duty Wooden Crate that has been Adapted for Fork Lift Handling
- All Fasteners and Anchors Included for Complete Installation